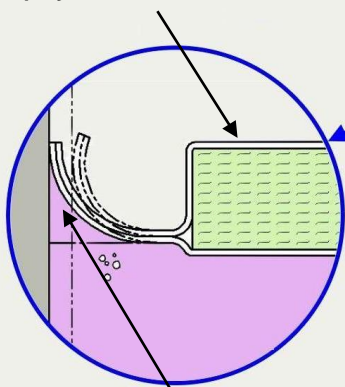


Ullage-Beating Tank “SKINS®”

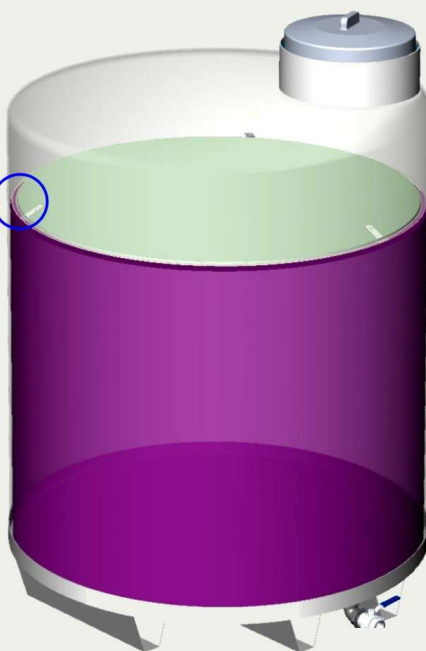
- ◆ SKINS are inert, flexible, surface-oxygen blocking discs. They are rolled-up to load through top or side doors, then spring open to float on the wine.
- ◆ SKINS reduce the exposed free wine surface to a very low level. The wine in a part-filled tank is protected as though the tank is full.
- ◆ Flextank surface blocking SKINS are made to measure for each tank body. They can also be sized to fit the necks of full tanks.
- ◆ SKINS Cut SO₂ & CO₂ usage, scum & VA development

Skins can be used in wine tanks of up to 6 metres in diameter!

‘SKINS’ are 20mm thick flexible, elastomeric foam discs, sealed into a tough, no-taint, food grade polyurethane film cover



The edge flap acts as a hygienic “wiper”, conforming to wall indentations & out-of-roundness. Free SO₂ from the wine keeps flap mould-free.



Once the Skin is installed, the head space is normally charged with CO₂ to protect the small area of exposed wine around the perimeter.

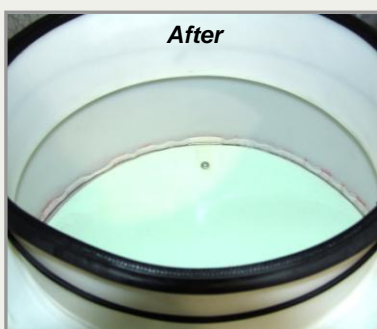
As gas dissolves into liquid at a rate directly proportional to the exposed surface area, re-charging the head space only needs to be done infrequently, i.e. once per month.

Skins are far more hygienic than movable head tanks, there is no wine weepage or mildew and no air sucking past the seal.

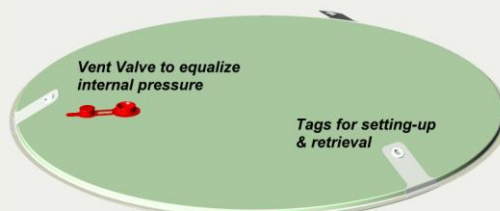
SO₂ consumption under Skins in a part-filled tank is significantly greater than that in a full tank, but generally significantly less than in a similar sized movable head tank.



Before



After

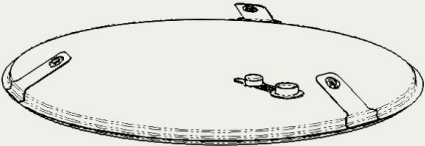
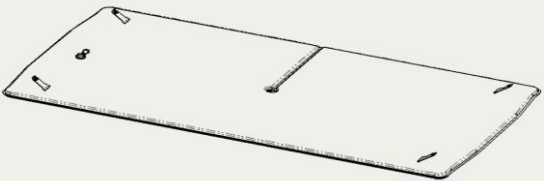


A venting valve is fitted to ensure that the unit is neither under nor over-inflated. Self-inflation can occur in a CO₂ atmosphere. The valve is usually left open in service



Each SKIN is fitted with three or more reinforced tags around the perimeter to allow it to be set up horizontally after loading & for easy retrieval. The tags don't tear or come off. This tag is being tested with 10kg of load applied. 3mm polyester “Venetian blind” cord is recommended as wine safe for attachment to the tags. Large SKINS can be handled with all three tags corded, like a parachute in reverse.

Superior to Variable-Capacity Tanks*!

<i>Description</i>	<i>Size Range</i>
<p>Standard Tank SKINS:</p>  <p>Made to Fit SKINS:</p>  <p>Shapes: Square, rectangular or circular:</p> <p style="text-align: center;">Up to 1m Diam.</p> <p style="text-align: center;">1m to 2m Diam:</p> <p style="text-align: center;">Above 2m Diam:</p> <p>Check with Flextank for minimum manhole opening to fit rolled-up SKIN through.</p> <p>SKINS above 1m diam. can be supplied with an optional storage over-bag (add \$45)</p>	<p>490-500 tank diam. 590-600 tank diam. 790-800 tank diam. 1370-1380 tank diam 1840-1850 tank diam 2360-2380 tank diam</p> <p>< 1m Circ. or Rect.</p> <p>1-2m Circ or Rect.</p> <p>2m x 2m or greater Heavy Duty Outer</p>

Features & Advantages

- ◆ Users state a “lot less” SO₂ usage in Skinned closed tanks vs. V-C tanks
- ◆ Flexible - easy roll-up, install & retrieve via top chamber or side door
- ◆ Tough, can be washed & re-used many times
- ◆ Edge “Wiper” helps keep out contaminants
- ◆ Hygienic, low-scalping, inert, no-taint, PROVEN wine-contact material
- ◆ Great for cold stabilizing, minimize dissolved O₂ and/or CO₂ at low temp.
- ◆ Use also in expansion chambers, concrete tanks, Potter hatchways etc.
- ◆ Hundreds in use in all States as well as in Europe, USA & New Zealand

INTERNATIONAL PATENTS PENDING